

Structuring a GP learning environment in rural and regional practices

Carla Taylor¹, Samia R Toukhsati¹, Lachlan Butcher¹

Introduction

The Learning Environment Health Check is a 58-question quality improvement self-assessment tool to help identify gaps and solutions to support supervisors in comprehensively structuring the learning environment.

Objectives

- To describe the general practice learning environment.
- To develop a practical self-assessment tool with 'plug-and-play' solutions.
- To help practices plan for, establish, and regularly appraise the quality of their learning environment.

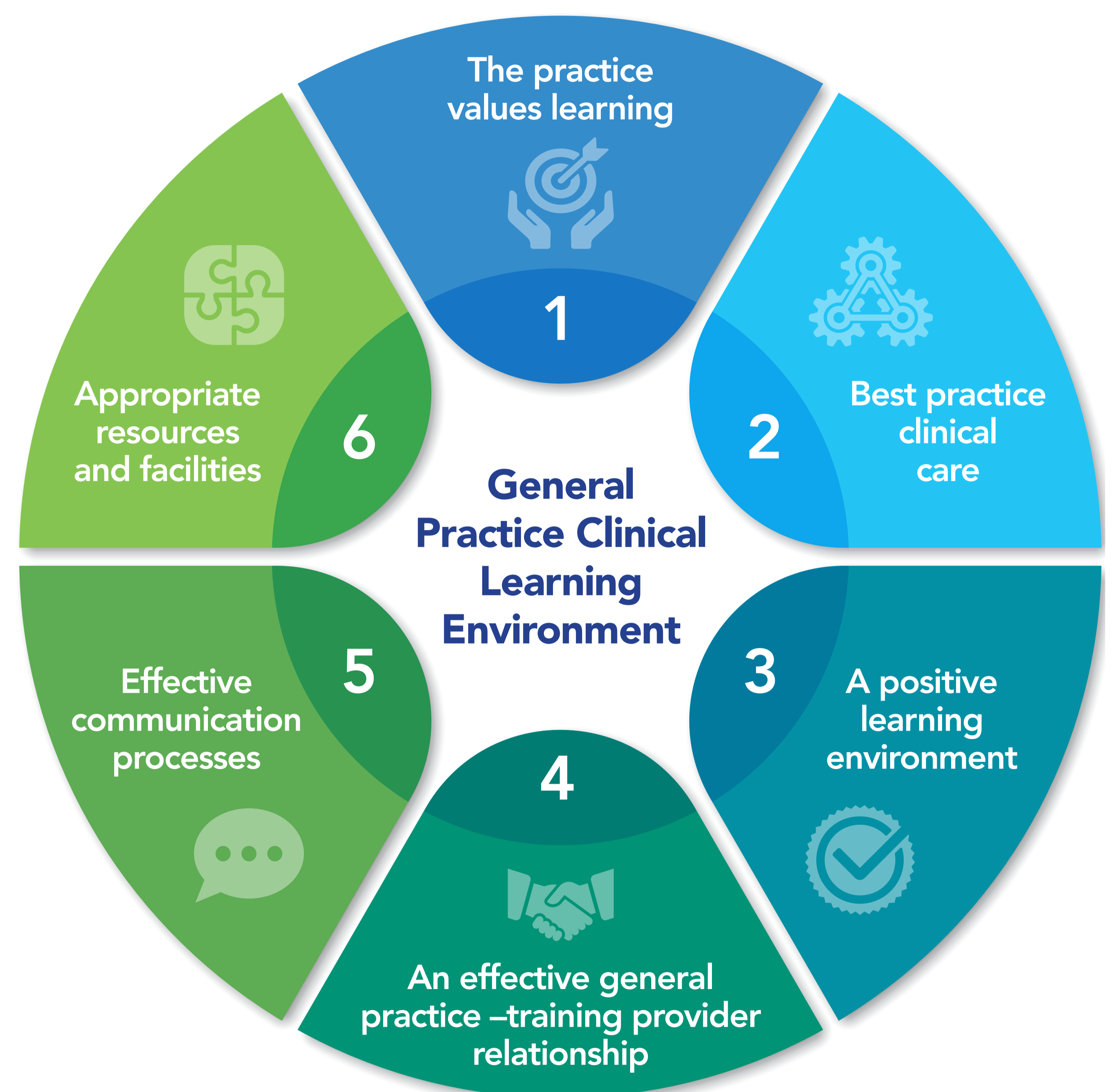
Method

1. Conduct research to define and describe what a learning environment looks like in GP settings².
2. Use the description of a GP learning environment to develop a 'Health Check' self-assessment tool.
3. Pilot the Health Check self-assessment tool in GP learning environments across Australia, refine and learn.

Results

- The General Practice Clinical Learning Environment (GPCLE) Framework is described by six elements, 19 objectives, and 53 descriptors of quality.
- Using the GPCLE Framework, a 58-question self-assessment 'Health Check' tool was formulated and piloted with 12 general practices across Australia, including Aboriginal Medical Services, Rural Flying Doctor Services, and private country practices.
- Feedback about the Health Check from general practices with well established learning environments showed that it facilitated self-reflection, giving practices confidence to know that they are on the right track in what they're doing.
- Feedback about the Health Check from general practices with less well-developed learning environments highlighted that it enabled a holistic reflection of the learning environment, whilst also providing solutions to fill gaps once identified.
- The results of the pilot showed that no learning environments conduct and document pastoral care discussions in standardised way.

Six key elements of a high-quality learning environment in a GP setting



Conclusion

- The GPCLE Framework is a best practice model for GP training
- The Health Check can be used to benchmark practices and to encourage self-reflection to identify areas in need of development to achieve best practice
- Data from the pilot study showed that accredited training practices still experience deficits, often in relation to broad components such as communication and feedback, and employment aspects like pastoral care.

View



JOURNAL
ARTICLE



WEBSITE



FRAMEWORK



SELF-
ASSESSMENT
TOOL